

M-Audio ProFire 2626



High-Definition 26-in/26-out FireWire Audio Interface with Octane Preamp Technology

Top Features

- 26 x 26 simultaneous analog/digital I/O > ideal for project studios
- eight preamps with Octane™ technology > award-winning quality
- flexible on-board DSP mixer > create multiple unique cue mixes
- user-assignable master volume knob > customize your setup
- functions as eight-channel mic pre/eight-channel A/D-D/A converter > standalone operation
- up to 24-bit/192kHz > pristine high-definition digital audio
- JetPLL technology > critically acclaimed jitter elimination
- Pro Tools M-Powered compatible* > industry-standard software

Building on a legacy of award-winning FireWire audio interfaces, the M-Audio ProFire™ 2626 brings next-generation performance to your PC or Mac host-based recording system. This powerful interface delivers 26 x 26 simultaneous I/O, complete with an onboard DSP mixer sourced from up to 52 audio streams. It features every kind of connection you need—including award-winning Octane™ preamp technology on all eight analog inputs, ADAT, S/PDIF, word clock and MIDI. Critically acclaimed JetPLL jitter elimination technology ensures pristine audio quality and reliable synchronization all the way up to high-definition 24-bit/192kHz resolution. In addition, ProFire 2626 offers easy FireWire connectivity, extremely low latency, dual headphone outputs, front-panel ¼" instrument inputs and standalone operation. Pro Tools M-Powered™ compatible

Includes Award-winning Octane Preamp Technology



The quality of your preamps is critical to how your music sounds. Embraced by reviewers and audio professionals alike, M-Audio set a new standard with the 8-channel Octane™ preamp. The ProFire 2626 delivers the same award-winning Octane technology with its eight onboard mic preamps, giving you pristine audio fidelity right from the start of your signal path.



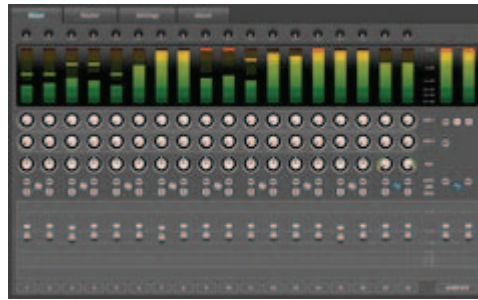
Onboard DSP Mixer and Router

Customize your setup and record the way you want thanks to the power and flexibility of the ProFire 2626 onboard DSP mixer and router. Use the router to select from up to 52 audio streams and send them to any of the 26 hardware outputs.* The adaptable onboard DSP mixer allows you to select from any of the 26 hardware inputs and 26 software returns as sources for any of its 18 input channels—allowing you to create up to eight stereo mixes. You can also create presets and instantly recall these setups at a later date.

**Routing in stereo pairs.*



In addition to exceptional sound, each preamp has a generous 75dB gain range, 48V phantom power, and a -20dB pad.



User-assignable Master Volume Control

The ProFire 2626 interface delivers a new level of flexible control via the customizable master volume knob. It's assignable to any or all of the four analog output pairs, so you can choose which output pair will feed your main monitors. You can also choose whether the master volume knob influences either or both of the two headphone outputs, or operates independently of them. In addition, you can assign the master level control to all four output pairs to uniformly attenuate up to a 7.1 surround mix.

High-definition 192kHz Sound and Solid Performance

The ProFire 2626 employs high-quality converters to deliver sampling rates up to 192kHz for pristine, high-definition sound quality. The unit also features critically acclaimed JetPLL technology to provide extremely stable synchronization and eliminate jitter that can degrade audio quality. In addition, the ProFire 2626 allows master or slave operation via internal clock, ADAT optical, S/PDIF and word clock. M-Audio's mature, stable drivers deliver solid performance and ultra-low latency. Complete with Octane preamp technology and premium A/D-D/A converters, you won't find a better sounding or more flexible host-based audio interface.

Pro Tools M-Powered Compatible

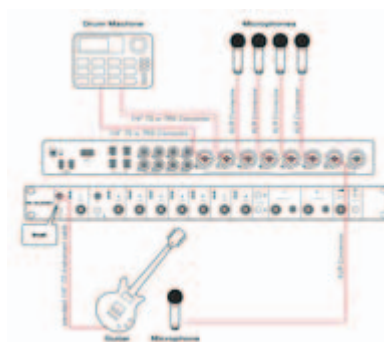
The ProFire 2626 is an extremely powerful interface for Pro Tools M-Powered. Flexible I/O, top-quality sound and low latency round out an incredible recording environment that is file-compatible with many other pro and project studios around the world.*

***Compatible with Pro Tools M-Powered 7.4 with downloadable update. Please visit m-audio.com for update availability. 96kHz and 18 x 18 I/O maximum with Pro Tools M-Powered.*

Standalone operation

The ProFire 2626 doubles as a standalone 8-channel preamp, 8-channel A/D-D/A converter and digital format converter. In standalone mode, the eight analog inputs route to the first eight ADAT optical output channels. This facilitates use of the line, instrument and mic ins—including the preamps—with other digital gear. Similarly, the first eight ADAT optical input channels feed the eight analog outputs to provide D/A functionality. You can also disable the D/A conversion to allow the analog input channels to route to both the analog and ADAT optical outputs—transforming the ProFire 2626 into a standalone 8-channel mic pre with eight discrete analog outputs plus 8-channel ADAT output. When the second optical port is not used for A/D conversion, the ProFire 2626 can also convert coaxial S/PDIF to optical S/PDIF.

Professional Connectivity for the Most Demanding Projects



The ProFire 2626 features essential connectivity for any studio, delivering rock-solid stability and optimal sound quality. Analog inputs are sourced from the eight combo jacks as either XLR mic or 1/4" TRS balanced line inputs. In addition, analog channels 1 and 2 provide easily accessible 1/4" TS instrument jacks on the front panel. Eight 1/4" TRS connectors provide balanced line outputs for monitoring and interfacing with other outboard gear. Digital I/O is available via 2 x 2 S/PDIF and 16 x 16 ADAT Lightpipe. The two front-panel headphone jacks feature separate sources and independent level controls for additional cue mixing flexibility.

Specifications

Line Inputs (Balanced)

Frequency Response +/- 0.1dB, 20Hz to 22kHz (48kHz)
+/- 0.4dB, 20Hz to 80kHz (192kHz)

Dynamic Range 110dB, A-weighted

Signal-to-Noise Ratio -110dB, A-weighted

THD+N 0.0008% (-102dB), 1kHz, -1dBFS

Crosstalk -120dB @ 1 kHz

Maximum Input level +19.6dBu, typical

Input Impedance >20k Ohms, balanced

Mic Inputs (Balanced) at Min Gain, No Pad

Frequency Response +/- 0.1dB, 20Hz to 22kHz

Dynamic Range 109dB, A-weighted

Signal-to-Noise Ratio -109dB, A-weighted

THD+N (min gain, no pad) 0.0011% (-99dB), 1kHz, -1dBFS

Crosstalk < -120dB @ 1kHz

Maximum Input level +6.5dBu, no pad

Input Impedance 3.7k ohms, balanced, no pad

Adjustable Gain >53dB without pad

Pad -20dB

Inst. Inputs (Unbalanced) at Min Gain, No Pad

Frequency Response +/- 0.1dB, 20Hz to 22kHz

Dynamic Range 108dB, A-weighted

Signal-to-Noise Ratio -108dB, A-weighted

THD+N (min gain, no pad) 0.0014% (-97dB), 1kHz, -1dBFS

pad)

Crosstalk	< -110dB @ 1kHz
Maximum Input level	13.7dBV, typical, no pad
Input Impedance	1M Ohm, unbalanced
Adjustable Gain	>53dB without pad
Pad	-20dB

Line Outputs (Balanced)

Frequency Response	+/- 0.1dB, 20Hz to 22kHz +/- 0.6dB, 20Hz to 80kHz (192kHz)
Dynamic Range	110dB, A-weighted
Signal-to-Noise Ratio	-110dB, A-weighted
THD+N	0.0013% (-98dB), 1kHz, -1dBFS
Crosstalk	< -110dB @ 1kHz
Maximum Output Level	+20.2dBu balanced, typical
Output Impedance	300 Ohms, balanced

Headphone Outputs at Maximum Volume into 32 Ohm Load

Frequency Response	+/- 0.4dB, 20Hz to 22kHz
Dynamic Range	110dB, A-weighted
Signal-to-Noise Ratio	-110dB, A-weighted
THD+Noise	0.007% (-83.0dB), 1kHz, -1dBFS
Max Output Level into 32 ohms	+6.8dBV, typical
Power into Ohms	150 mW into 32 Ohms
Output Impedance	75 Ohms
Load Impedance	24 to 600 Ohms